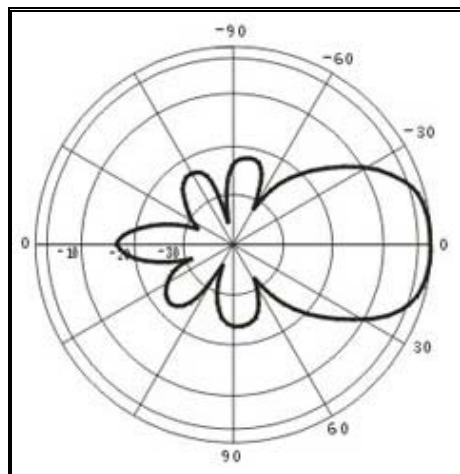
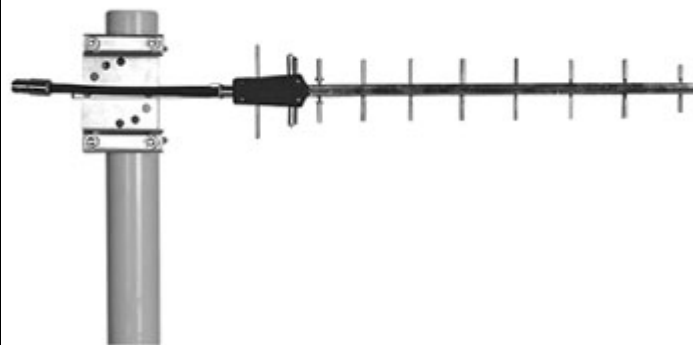


Yagi Directional Antenna Series (for GSM & CDMA BTS)

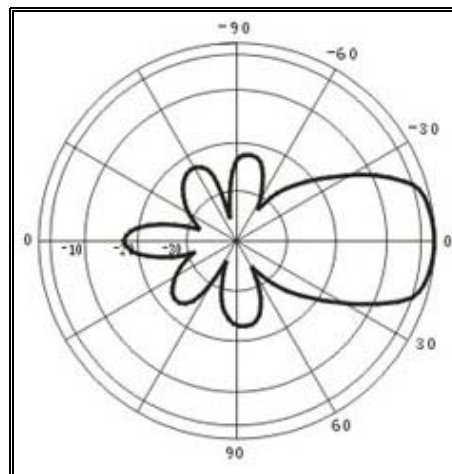
● 1400-1990MHz

Yagi Directional Antenna

Model	TMY-12-1.5V
Frequency Range	1400-1580(MHz)
Input Impedance	50(Ω)
VSWR	<1.5
Gain	12(dBi)
(3dB)HPBW	38°H-plane 36°V-plane
Maximum Power	200(W)
Polarization	Vertical Polarization
Connector Type	N FEMALE
Lightning Protection	Direct Ground
Wind Velocity	200(km/h)
Length	680(mm)
Structure	10 Cells
Weight	0.8(Kg)
Hold Pole Diameter	Φ 40- ϕ 60(mm)



Horizontal Plane



Vertical Plane