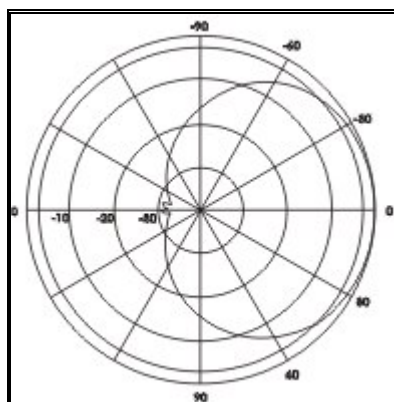
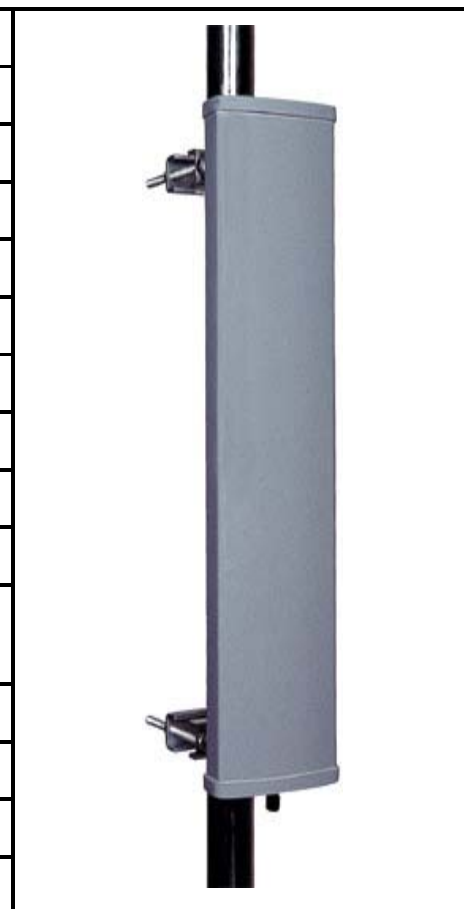


Panel Directional Antenna Series (for GSM & CDMA BTS)

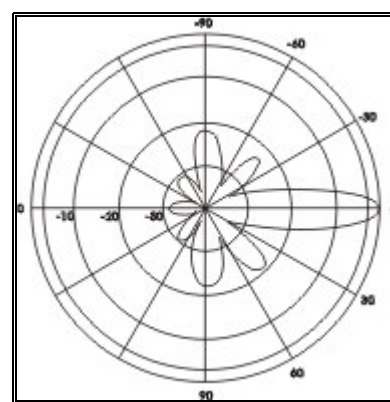
● 3500-3600MHz

## 3.5G-90° BTS Panel Directional Antenna

Model	TMD-16090-3.5V
Frequency Range	3400-3600(MHz)
Input Impedance	50( $\Omega$ )
VSWR	<1.5
Gain	16.5(dBi)
(3dB)HPBW	90°H-plane 7°V-plane
F/B	>25(dB)
Maximum Power	200(W)
Polarization	Vertical Polarization
Connector Type	7/16 or N FEMALE
Lightning Protection	Direct Ground
Wind Velocity	200(km/h)
Height/Width/Depth	780/170/65(mm)
Weight	5.5(Kg)
Hold Pole Diameter	$\phi$ 50- $\phi$ 110(mm)



Horizontal Plane



Vertical Plane